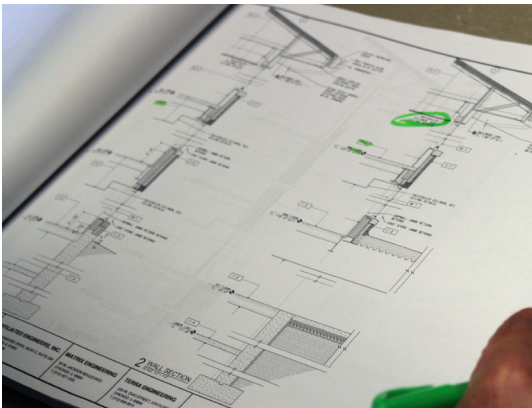


campus code compliance & fire safety

CAMPUS CODE COMPLIANCE & FIRE SAFETY MANAGES THE UNIVERSITY'S FIRE AND LIFE SAFETY PROGRAMS; THEY PROVIDE PLAN REVIEW SERVICES FOR CAMPUS CONSTRUCTION PROJECTS TO ENSURE ACCESSIBILITY COMPLIANCE AND SAFETY GUIDELINES ARE MET.



Campus Code Compliance & Fire Safety (CCC&FS) participates in the plan review process of a project to assist with scoping and code compliance for building, plumbing, mechanical, electrical, fire and safety codes, and American with Disabilities Act (ADA)/Illinois accessibility codes. CCC&FS manages the university's fire and life safety programs and acts as a liaison between the campus and the Champaign and Urbana fire departments regarding any campus construction or development activity.

CCC&FS participates in acceptance testing for new fire protection systems, coordinates the annual inspection and testing of existing fire alarm, fire pump and fire suppression systems, and shares system design information with the fire departments. The unit also conducts the annual inspection, testing, and maintenance of more than 7,000 campus fire extinguishers.

CCC&FS is designated as the campus authority having jurisdiction for the application of the university's life safety, fire, and construction codes. The unit also works with the Office of Campus Emergency Planning to assist campus units in preparation of tornado and all hazard emergency plans and identifying areas of refuge.

CCC&FS works with the Urbana and Champaign fire departments to coordinate fire safety inspections on housing units and other select campus buildings. The unit also performs fire safety inspections, examines scenery and sets for theatrical productions, follows up on fire department inspections, and inspects and approves the use of large tents for special events.

Contact Information:

Craig Grant, associate director
Campus Code Compliance & Fire Safety
217-244-7215
cpgrant@illinois.edu

Media Contact:

Steve Breitwieser
Customer Relations and Communications
217-300-2155
sbreit@illinois.edu



10/3/2013

Facilities & Services
PLAN • BUILD • MAINTAIN • SERVE

