

Chemistry Annex (0010)

Addition and Renovation

Building Information

Year Built: 1931

Project Area Primary Users: Dept. of Chemistry

Affected Rooms: All

Room Capacities: 100 lab stations. 452 total students.

Narrative

This project **gutted and remodeled the existing facility**. The addition constructed will be housing building services. The addition contains **central air handling units, ancillary spaces, and ADA compliant circulation**. It also included a **complete replacement of laboratory furniture (including fume hoods), as well as a complete update of the lighting, finishes, furnishings, and instructional technologies** in these rooms. This project followed the master plan developed by Harley Ellis Deveraux in 2007.



Project Pictures

After



Laboratory

Left - Updated Laboratory equipment

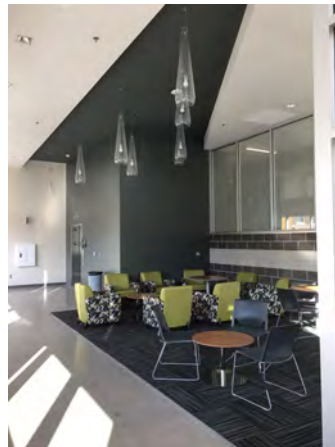


Lecture Hall

Above - New lecture hall with new furnishings and updated instructional technologies

Building Lobby

Right - New lighting fixtures and furniture



Before

Laboratory

Left - Deteriorated Flooring

Middle - Aged lighting fixtures

Right - Aged Laboratory equipment

