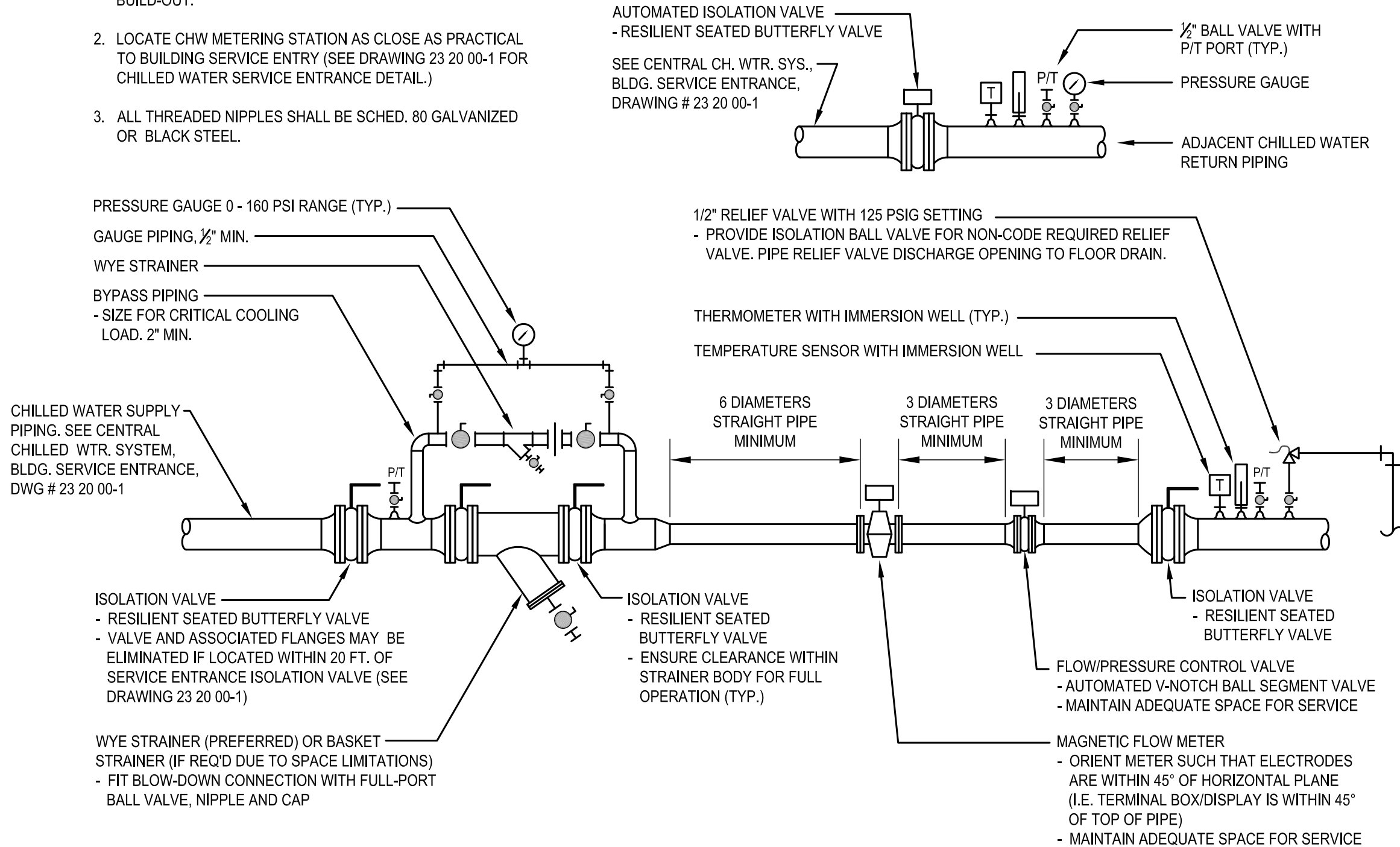


NOTES:

1. SIZE METER/CONTROL VALVE LINE-UP FOR 7-15 FPS FLUID VELOCITY BASED UPON FLOW RATE FOR FULL SYSTEM BUILD-OUT.
2. LOCATE CHW METERING STATION AS CLOSE AS PRACTICAL TO BUILDING SERVICE ENTRY (SEE DRAWING 23 20 00-1 FOR CHILLED WATER SERVICE ENTRANCE DETAIL.)
3. ALL THREADED NIPPLES SHALL BE SCHED. 80 GALVANIZED OR BLACK STEEL.



0	8/25/10	ORIGINAL ISSUE
#		REVISION DESCRIPTION
Date: September 30, 2011		
Dwg. No.: 23 09 13-03		



CENTRAL CHILLED WATER SYSTEM METERING STATION

NOT TO SCALE

23 09 13-3

CENTRAL CHILLED WATER SYSTEM METERING STATION

UNIVERSITY OF ILLINOIS AT URBANA-CHAMPAIGN FACILITIES STANDARDS - ADDENDUM NO. 2 - REVISED DRAWING