

EXTERIOR SYSTEM AIR VENT - 1" CORPORATION STOP AND FULL PORT BALL VALVE WITH HOSE ADAPTER AND CAP

NEW OR EXISTING BUILDING FOUNDATION WALL

SMOOTH CORE DRILLED PENETRATION THROUGH POURED CONCRETE WALL), POURED IN PLACE WALL SLEEVE (IN NEW WALL) OR WALL SLEEVE GROUTED IN PLACE WITH HYDRAULIC CEMENT (IN EXISTING WALL). WALL SLEEVE SHALL BE STANDARD WEIGHT STEEL PIPE OR DUCTILE IRON PIPE.

FACTORY-FABRICATED CLASS 53 DUCTILE IRON PIPE, FLANGED END X PLAIN END. (SEPARATE WALL ADAPTER NOT REQUIRED WITH HDPE PIPING)

MECHANICALLY RESTRAINED UNDERGROUND PIPE JOINT (NOT APPLICABLE WITH HDPE PIPING)

UNDERGROUND CHILLED WATER DISTRIBUTION PIPING. DUCTILE IRON OR HDPE PIPING

LINK TYPE RUBBER MECHANICAL SEALING DEVICE WITH S.S. HARDWARE. ALL THREADED NUTS SHALL BE ACCESSIBLE FROM EITHER INSIDE OR OUTSIDE OF BUILDING AS SHOWN

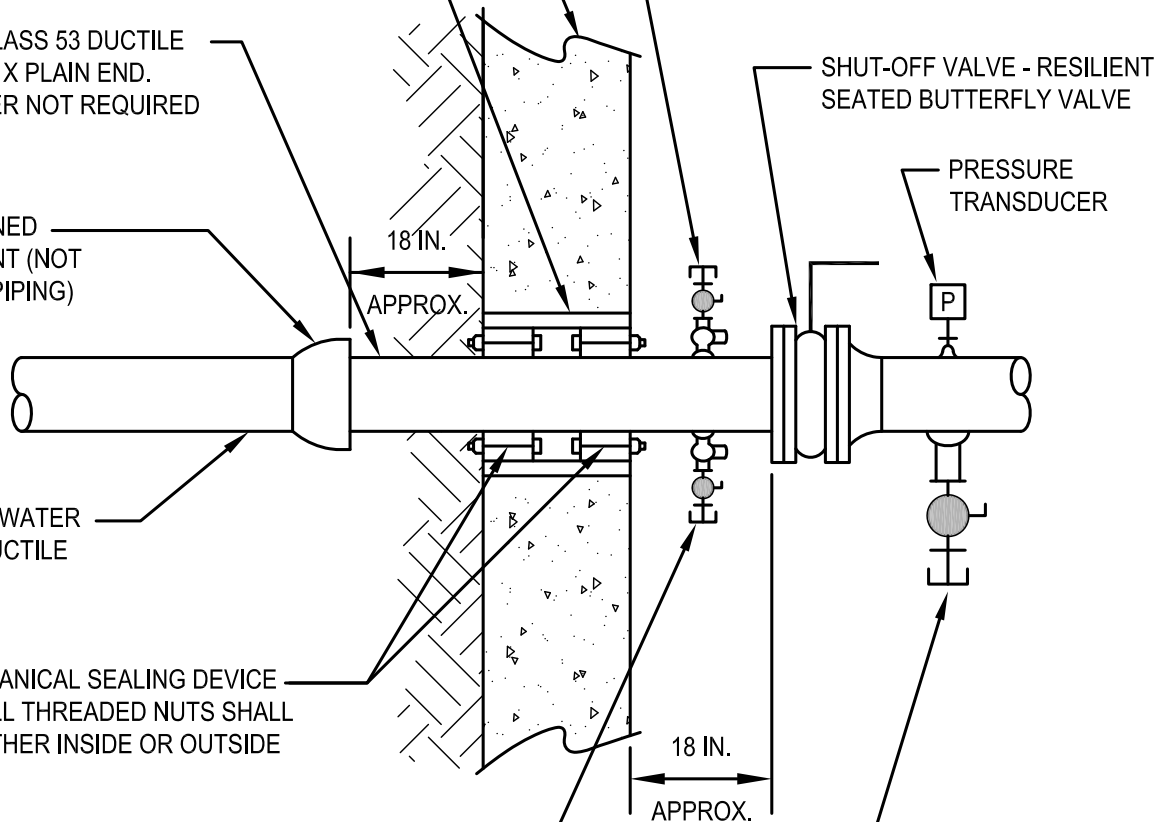
EXTERIOR SYSTEM DRAIN - 1" CORPORATION STOP AND FULL PORT BALL VALVE WITH HOSE ADAPTER AND CAP

PROVIDE CONNECTION TO ACCOMODATE CIRCULATION FOR SYSTEM CLEANING AND FLUSHING.

- SIZE AS REQUIRED TO SATISFY FLUID VELOCITY/FLOW RATE, (2" MIN.).
- PROVIDE FULL PORT BALL VALVE WITH NIPPLE AND CAP (SHOWN) OR RESILIENT SEATED BUTTERFLY
- VALVE WITH BLIND FLANGE.

**NOTE:**

TYPICAL FOR BUILDING CHILLED WATER SUPPLY AND RETURN PIPING.



# CENTRAL CHILLED WATER SYSTEM - BUILDING SERVICE ENTRANCE



NOT TO SCALE

23 20 00-1

CENTRAL CHILLED WATER SYSTEM BUILDING SERVICE ENTRANCE

Date: August 17, 2010

Dwg. No.: 23 20 00-1