

EXTERIOR SYSTEM AIR VENT - 1" CORPORATION STOP AND FULL PORT BALL VALVE WITH HOSE ADAPTER AND CAP

NEW OR EXISTING BUILDING FOUNDATION WALL

SMOOTH CORE DRILLED PENETRATION THROUGH POURED CONCRETE WALL, OR WALL SLEEVE GROUTED IN PLACE WITH HYDRAULIC CEMENT. WALL SLEEVE SHALL BE STANDARD WEIGHT STEEL PIPE OR DUCTILE IRON PIPE.

FACTORY-FABRICATED CLASS 53 DUCTILE IRON PIPE, FLANGED END X PLAIN END. (SEPARATE WALL ADAPTER NOT REQUIRED WITH HDPE PIPING)

MECHANICALLY RESTRAINED UNDERGROUND PIPE JOINT (NOT APPLICABLE WITH HDPE PIPING)

UNDERGROUND CHILLED WATER DISTRIBUTION PIPING.

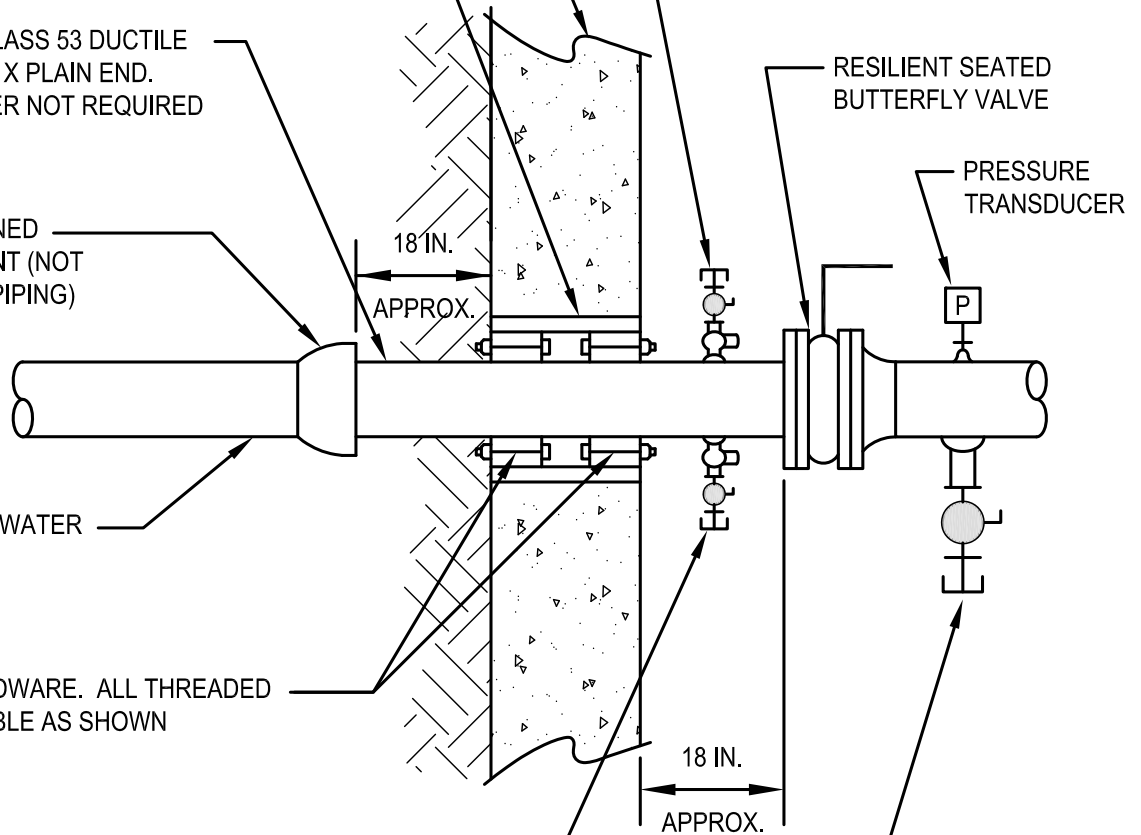
LINK SEAL WITH S.S. HARDWARE. ALL THREADED NUTS SHALL BE ACCESSIBLE AS SHOWN

EXTERIOR SYSTEM DRAIN - 1" CORPORATION STOP AND FULL PORT BALL VALVE WITH HOSE ADAPTER AND CAP

PROVIDE CONNECTION TO ACCOMODATE CIRCULATION FOR SYSTEM CLEANING AND FLUSHING.

- SIZE AS REQUIRED TO SATISFY FLUID VELOCITY/FLOW RATE, (2" MIN.).
- PROVIDE FULL PORT BALL VALVE WITH NIPPLE AND CAP (SHOWN) OR RESILIENT SEATED BUTTERFLY VALVE WITH BLIND FLANGE.

NOTE:
TYPICAL FOR BUILDING CHILLED WATER SUPPLY AND RETURN PIPING.



CENTRAL CHILLED WATER SYSTEM - BUILDING SERVICE ENTRANCE



NOT TO SCALE

23 20 00-1

0	8/17/10	ORIGINAL ISSUE
#	DATE	REVISION DESCRIPTION

Date: September 30, 2011

Dwg. No.: 23 20 00-01

CENTRAL CHILLED WATER SYSTEM BUILDING SERVICE ENTRANCE