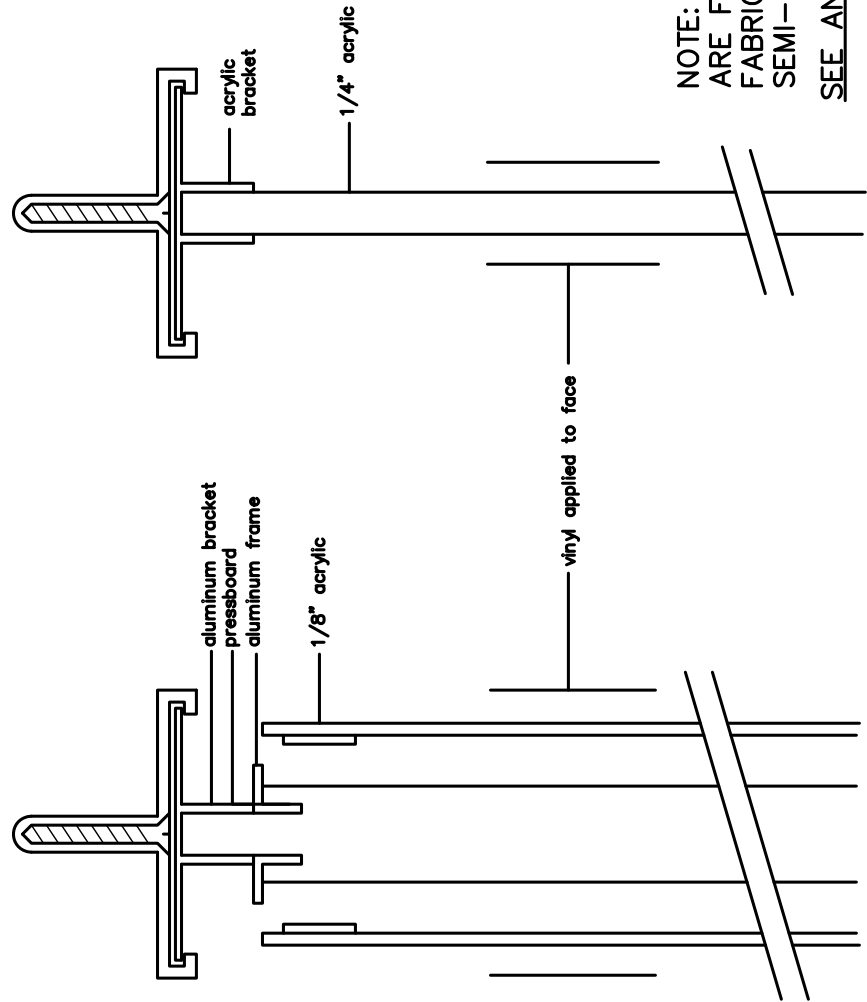
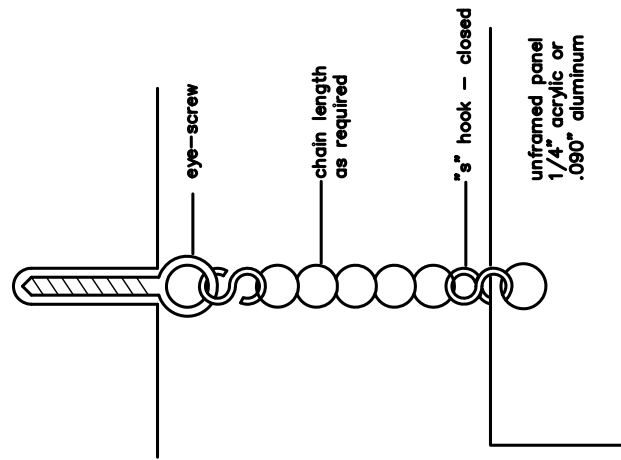


Width & height vary per message  
 3" caps and lower case will be accepted.



NOTE: FONTS AND BRAILLE AS SHOWN  
 ARE FOR GRAPHIC REPRESENTATION ONLY.  
 FABRICATED TYPEFACE SHALL BE OPTIMA  
 SEMI-BOLD WITH GRADE 2 BRAILLE.  
 SEE ANCHORAGE DETAILS 10440-25

INTERIOR IDENTIFICATION SYSTEM  
 TYPE 10a: DIRECTIONAL, SINGLE PANEL, CEILING MT.

Date: June 15, 2013  
 Dwg. No.: 10 14 03-20