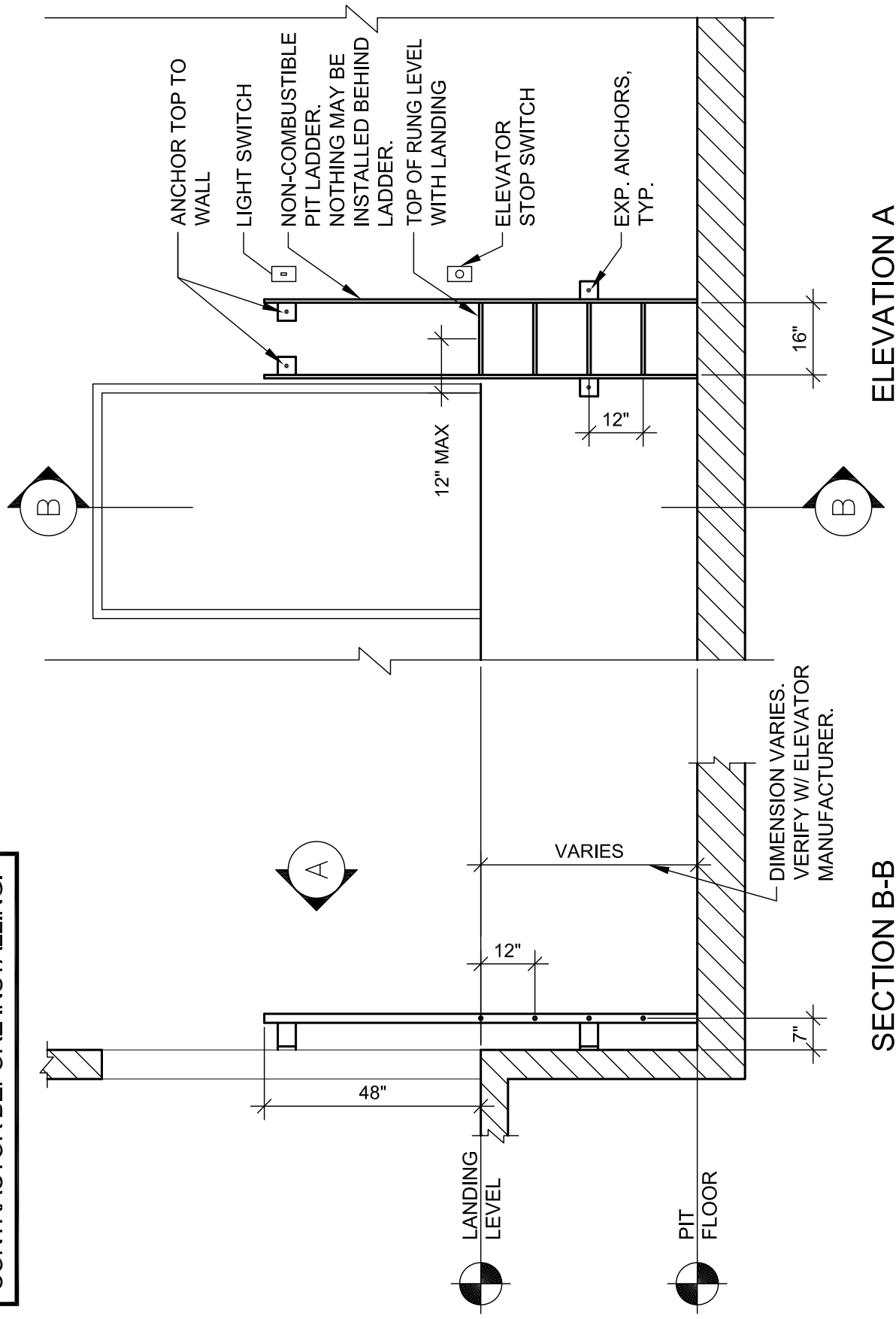


GENERAL NOTE:
 LOCATION OF ALL ITEMS MUST BE
 COORDINATED WITH ELEVATOR
 CONTRACTOR BEFORE INSTALLING.



ELEVATION A
 NTS

SECTION B-B
 NTS

ELEVATOR PIT - LADDER DETAIL

Date: June 15, 2013

Dwg. No.: 14 20 00-3