

24" DEEP HEAT TRAP IF THERMOSTATIC MIXING VALVE IS HIGHER THAN WATER HEATER OUTLET

HOT WATER SUPPLY PIPING

THREADED PLUG - SIZE EQUAL TO WATER HEATER OUTLET SIZE.

COMBINATION TEMPERATURE / PRESSURE RELIEF VALVE (INSTALL DIRECTLY ON HEATER) (PIPE TO OPEN SITE CAST IRON DRAIN WITH CAST IRON PIPING)

THERMOSTATIC MIXING VALVE

PIPE HWC DIRECTLY TO MIXING VALVE CIRCULATING PORT WHEN AVAILABLE

COLD WATER SUPPLY PIPING

HOT WATER RETURN PIPING
FULL PORT BALL VALVE (TYP.)

THERMOMETER (TYP.)

PNEUMATIC TEMPERATURE REGULATING VALVE

STRAINER

HOT WATER RECIRCULATING PUMP

STEAM SUPPLY PIPING

CONDENSATE RETURN PIPING

F&T TRAP

EXPANSION TANK

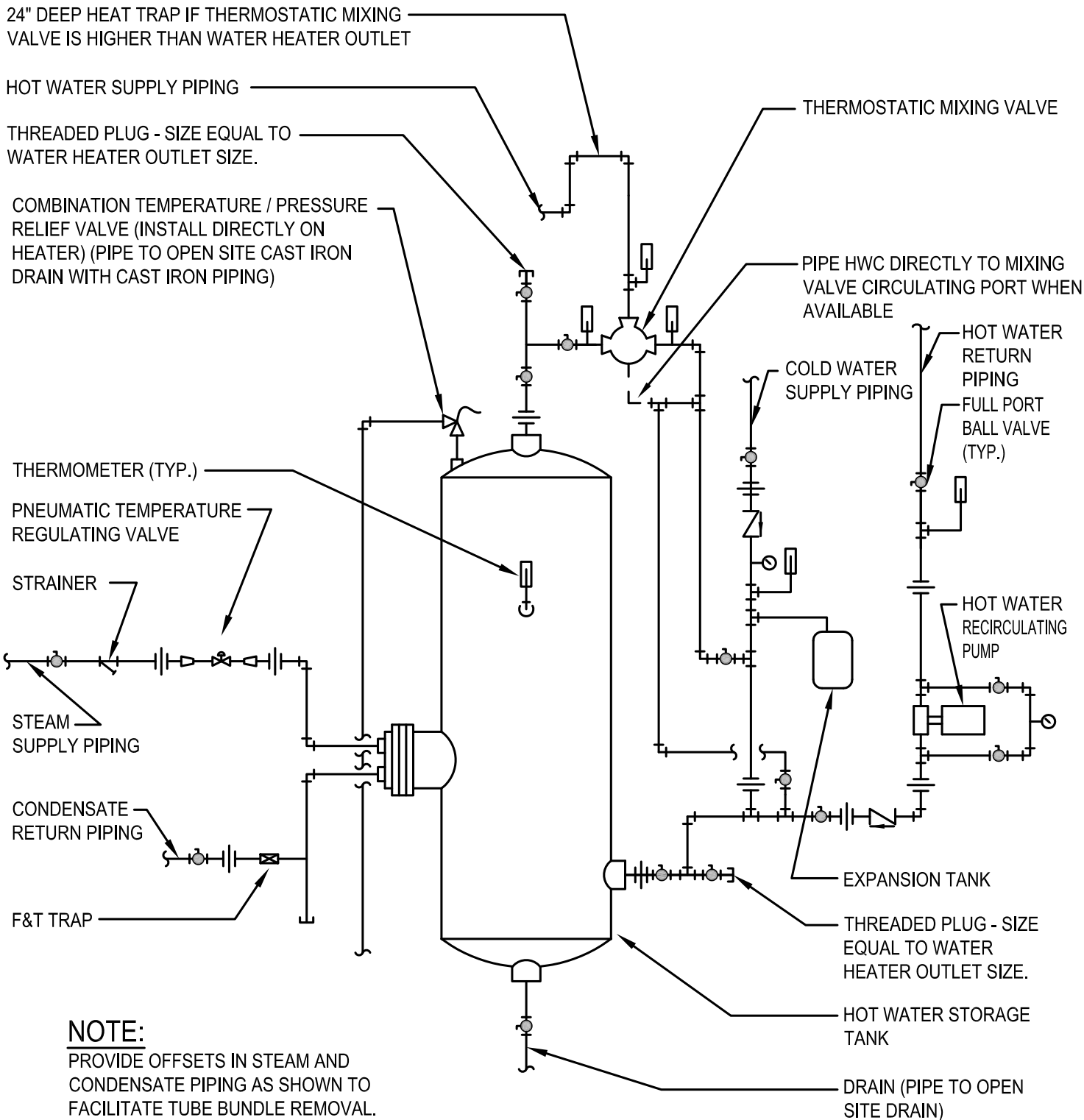
THREADED PLUG - SIZE EQUAL TO WATER HEATER OUTLET SIZE.

HOT WATER STORAGE TANK

DRAIN (PIPE TO OPEN SITE DRAIN)

NOTE:

PROVIDE OFFSETS IN STEAM AND CONDENSATE PIPING AS SHOWN TO FACILITATE TUBE BUNDLE REMOVAL.



STEAM TO DOMESTIC HOT WATER GENERATOR INSTALLATION



NOT TO SCALE

22 35 24-1

0	4/8/10	ORIGINAL ISSUE
#	DATE	REVISION DESCRIPTION

STEAM TO DOMESTIC HOT WATER GENERATOR INSTALLATION

Date: June 15, 2013

Dwg. No.: 22 35 24-1