

DRAWING NOTES:

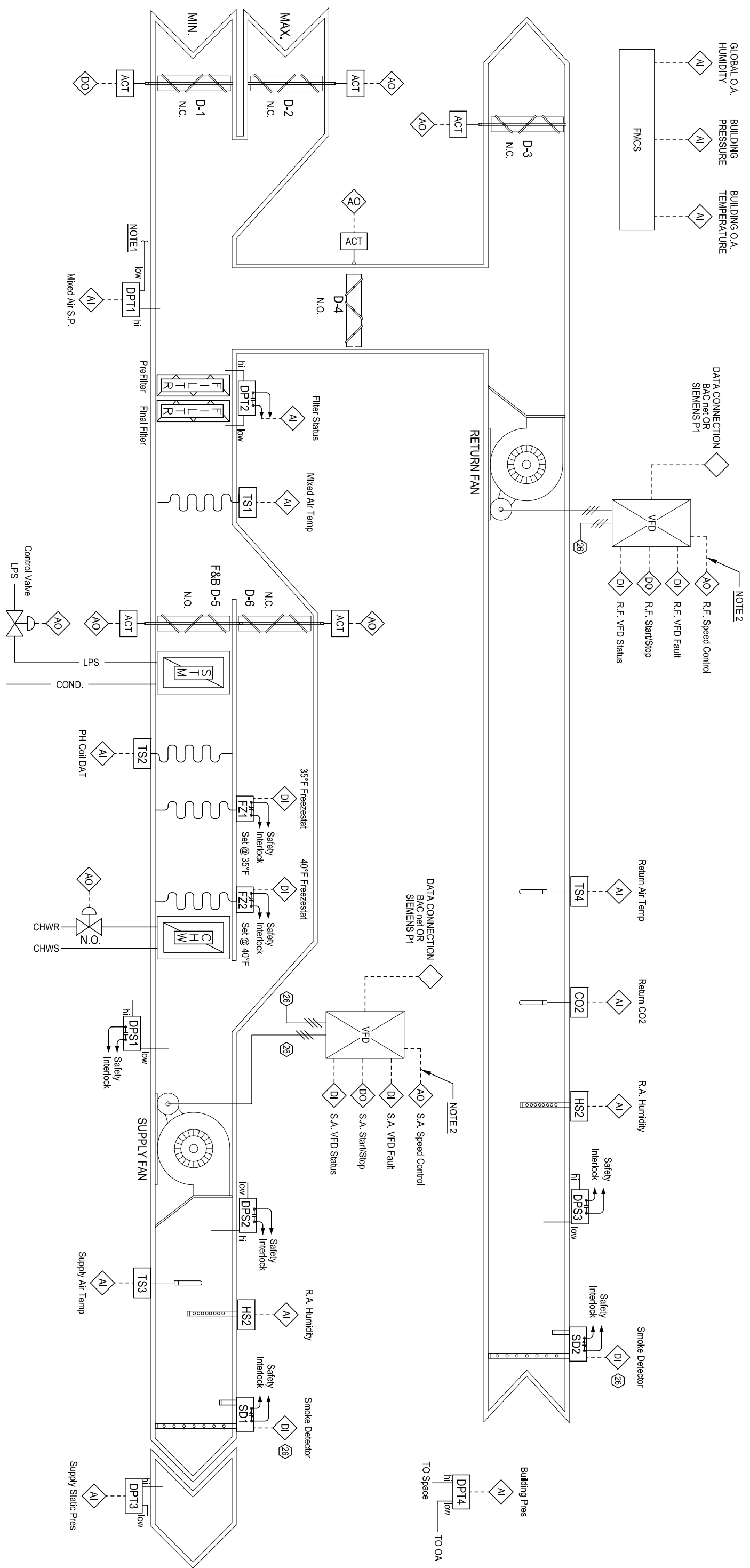
NOTE 1 - THE HIGH SIDE REFERENCE OF THE MIXED AIR D.P. SENSOR SHALL BE TUBED NEAR THE OUTDOOR AIR INTAKE OF THE AHU. THE LOW SIDE SHALL BE TUBED TO THE MIXED AIR PLENUM

NOTE 2 - ALL VFD'S, INCLUDING ENERGY RECOVERY WHEEL SHALL BE PROVIDED WITH FOUR HARD WIRED POINTS AND DATA CONNECTION SHALL BE CONNECTED AND INTEGRATED TO PRIMARY BAS SYSTEM BY TC CONTRACTOR.

26 Power Wiring by Division 26 Contractor

GENERAL NOTES:

1. ALL RELAYS SHALL BE GOLD CONTACT.
2. PILOT RELAYS SHALL BE USED FOR ALL DIGITAL OUTPUT POINTS.
3. OPTICAL ISOLATION (ISOVERTERS) SHALL BE USED FOR ALL ANALOG INPUT POINTS AND ANALOG OUTPUT POINTS TO VFD'S OR ANY OTHER CONTROLLER/ANALYZER POWERED FROM A SEPARATE CIRCUIT.



TYPE VAV AHU MINIMUM OA, STEAM PREHEAT

Date: June 15, 2013
 Dwg. No.: 23 09 05-2