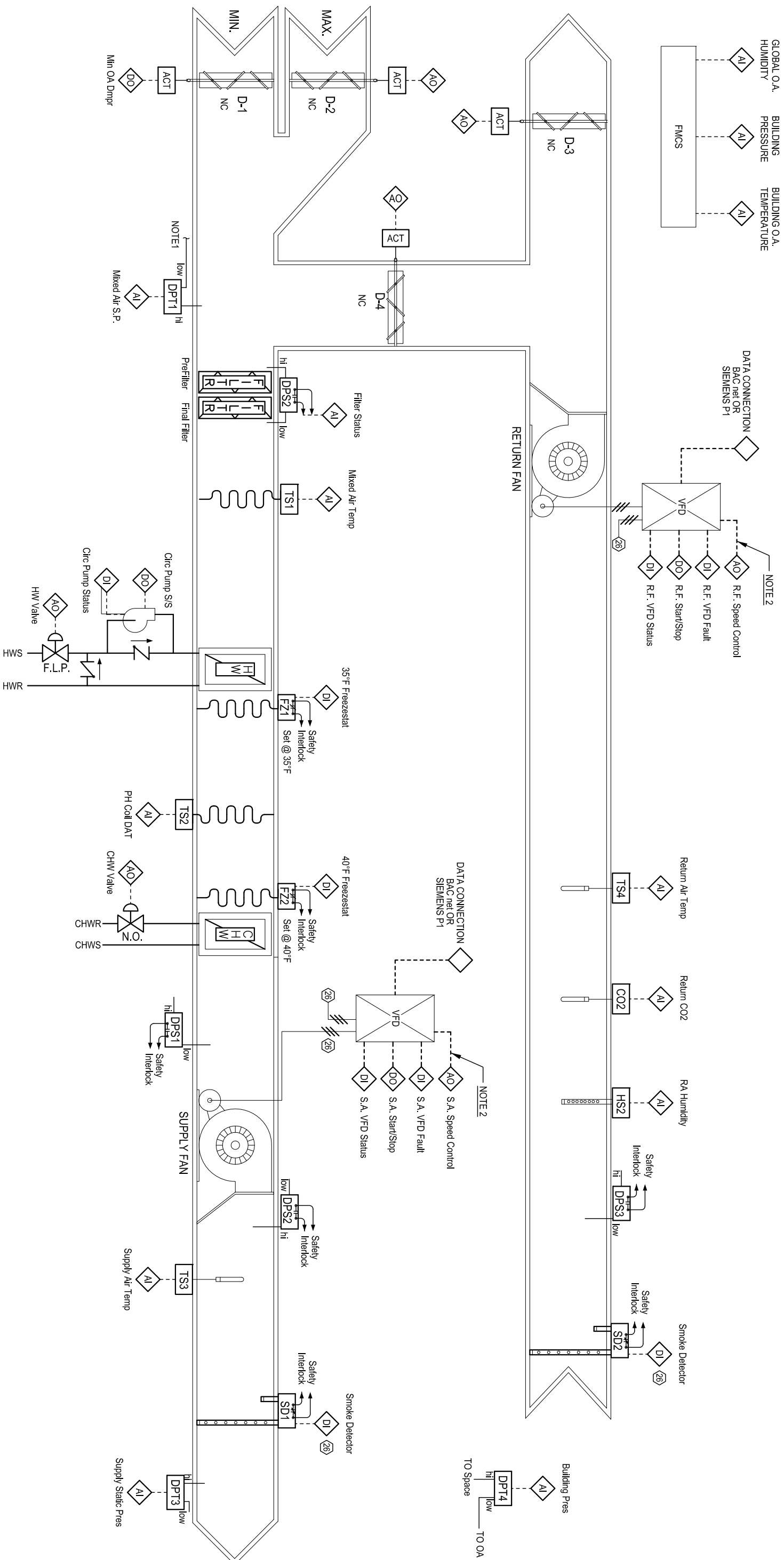


DRAWING NOTES:

NOTE 1 - THE HIGH SIDE REFERENCE OF THE MIXED AIR D.P. SENSOR SHALL BE TUBED NEAR THE OUTDOOR AIR INTAKE OF THE AHU. THE LOW SIDE SHALL BE TUBED TO THE MIXED AIR PLENUM

NOTE 2 - ALL VFDs, INCLUDING ENERGY RECOVERY WHEEL VFD SHALL BE PROVIDED WITH FOUR HARD WIRED POINTS AND DATA CONNECTION SHALL BE CONNECTED AND INTEGRATED TO PRIMARY BAS SYSTEM BY TC CONTRACTOR.

26 Power Wiring by Division 26 Contractor



GENERAL NOTES:

1. ALL RELAYS SHALL BE GOLD CONTACT.
2. PILOT RELAYS SHALL BE USED FOR ALL DIGITAL OUTPUT POINTS.
3. OPTICAL ISOLATION (ISOVERTERS) SHALL BE USED FOR ALL ANALOG INPUT POINTS AND ANALOG OUTPUT POINTS TO VFDs OR ANY OTHER CONTROLLER/ANALYZER POWERED FROM A SEPARATE CIRCUIT.

TYPE CV AHU, MINIMUM OA, HW PREHEAT

Date: June 15, 2013

Dwg. No.: 23 09 05-5