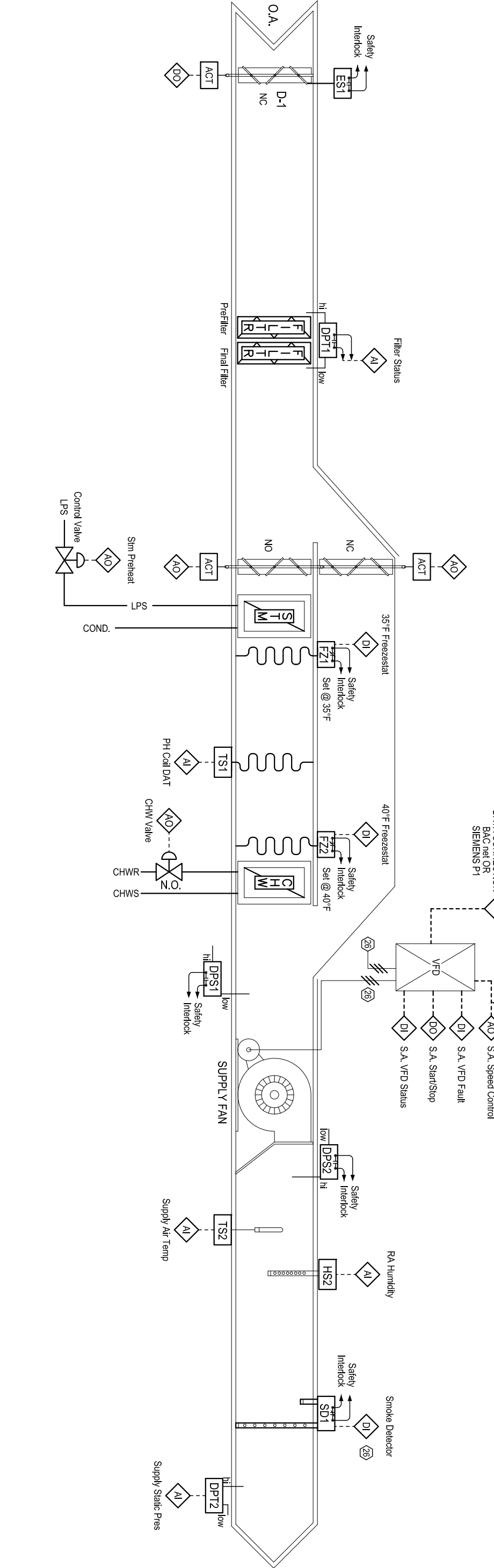
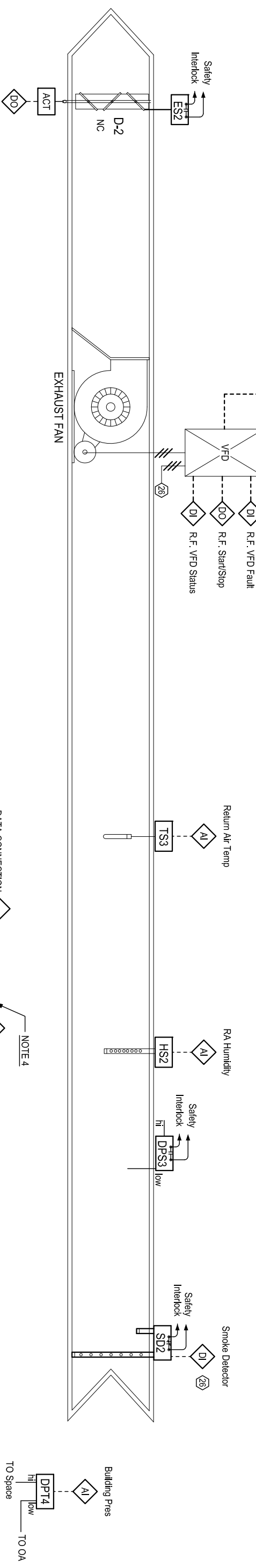


- GENERAL NOTES:**
1. ALL RELAYS SHALL BE GOLD CONTACT.
  2. PILOT RELAYS SHALL BE USED FOR ALL DIGITAL OUTPUT POINTS.
  3. OPTICAL ISOLATION (ISOVERTERS) SHALL BE USED FOR ALL ANALOG INPUT POINTS AND ANALOG OUTPUT POINTS TO VFDs OR ANY OTHER CONTROLLER/ANALYZER POWERED FROM A SEPARATE CIRCUIT.
  4. ALL VFDs, INCLUDING ENERGY RECOVERY WHEEL VFD SHALL BE PROVIDED WITH FOUR HARD WIRED POINTS AND DATA CONNECTION SHALL BE CONNECTED AND INTEGRATED TO PRIMARY BAS SYSTEM BY TC CONTRACTOR.
- 26 Power Wiring by Division 26 Contractor



**TYPE CV AHU, 100%OA, STEAM PREHEAT**

Date: June 15, 2013  
 Dwg. No.: 23 09 05-6