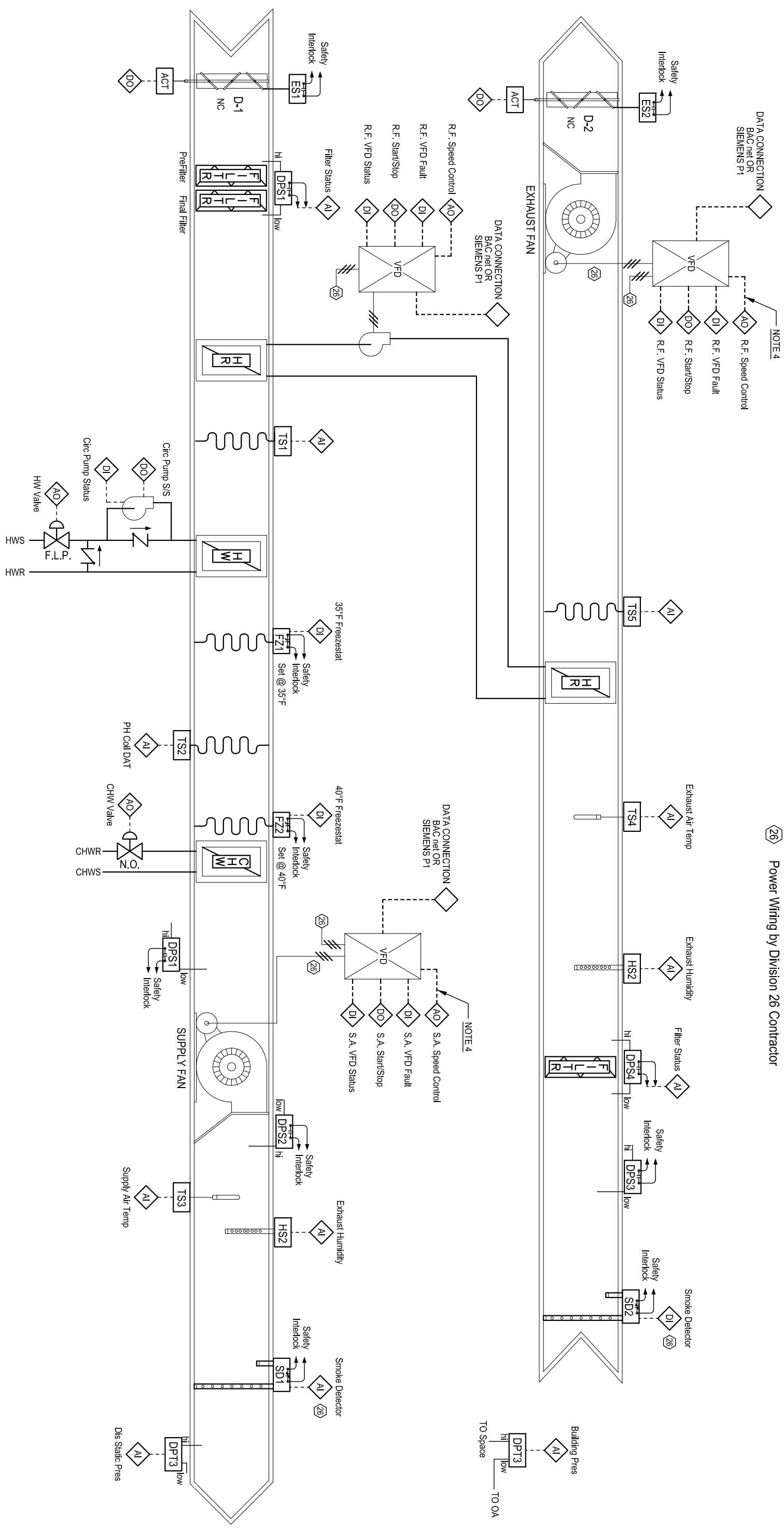


- GENERAL NOTES:**
1. ALL RELAYS SHALL BE GOLD CONTACT.
 2. PILOT RELAYS SHALL BE USED FOR ALL DIGITAL OUTPUT POINTS.
 3. OPTICAL ISOLATION (ISOVERTERS) SHALL BE USED FOR ALL ANALOG INPUT POINTS AND ANALOG OUTPUT POINTS TO VFD'S OR ANY OTHER CONTROLLER/ANALYZER POWERED FROM A SEPARATE CIRCUIT.
 4. ALL VFD'S, INCLUDING ENERGY RECOVERY WHEEL VFD SHALL BE PROVIDED WITH FOUR HARD WIRED POINTS AND DATA CONNECTION SHALL BE CONNECTED AND INTEGRATED TO PRIMARY BAS SYSTEM BY TC CONTRACTOR.

26 Power Wiring by Division 26 Contractor



TYPE CV AHU, 100%OA, HW PREHEAT, HEAT RECOVERY LOOP

Date: June 15, 2013
Dwg. No.: 23 09 05-8