



Facilities & Services

TRANSPORTATION CLOSURE FORM

(Streets, Sidewalks, Bike Paths & Bike Parking)

Date Submitted: 8/10/20

Street(s), Sidewalks, Bike Path or Parking to be Closed: S. Lincoln Ave, south of Florida

Intersecting Streets which are affected or define limits of closure: center lane of S. Lincoln approx. 200' south of Florida Ave.

Reason for Closure: Communications duct cleaning and inner-duct installation (no digging, using existing structures for access).

Project On-Site Contact Person: James Driskill
U of I Project Manager (PM): Vince Tutich

Phone Number: 309-696-8920
U of I PM Phone Number: 217-390-7778

Date of Closure: 8/11/20

Expected Time of Closure: 7:30 AM - 3:30 PM Each Day

Date of Re-opening: 8/14/20

Expected Time of Re-opening: 3:30 Pm

Work Order No. (if used): 67796

CDB Contract No.: N/A

Is Traffic re-routing necessary? No

If so, who should be involved? N/A

Will Pedestrian/bicycle traffic be affected? No

If so, will the sidewalk be closed? No

Will ADA audible/visual warnings and barriers be provided? N/A

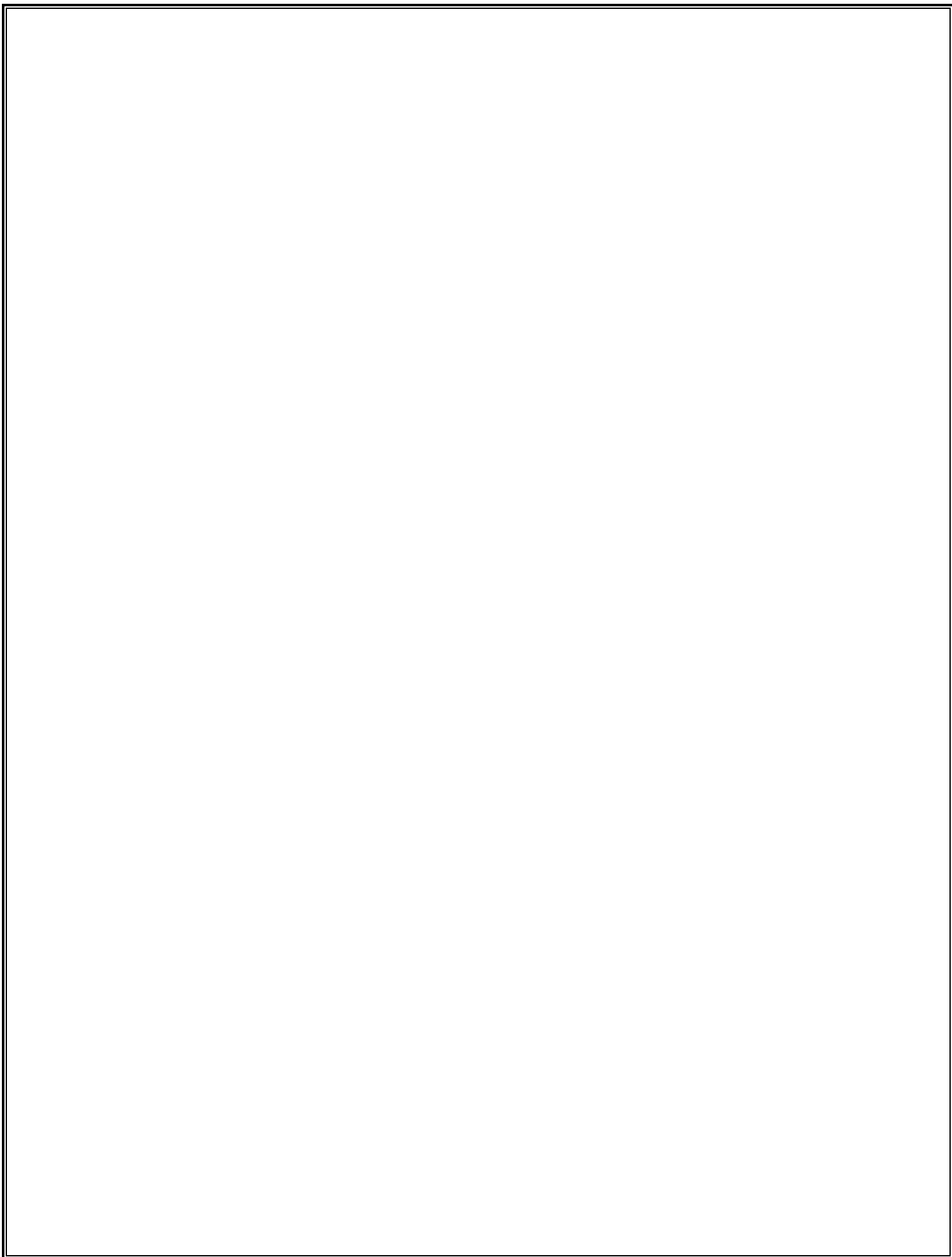
Will pedestrian traffic be routed safely? N/A

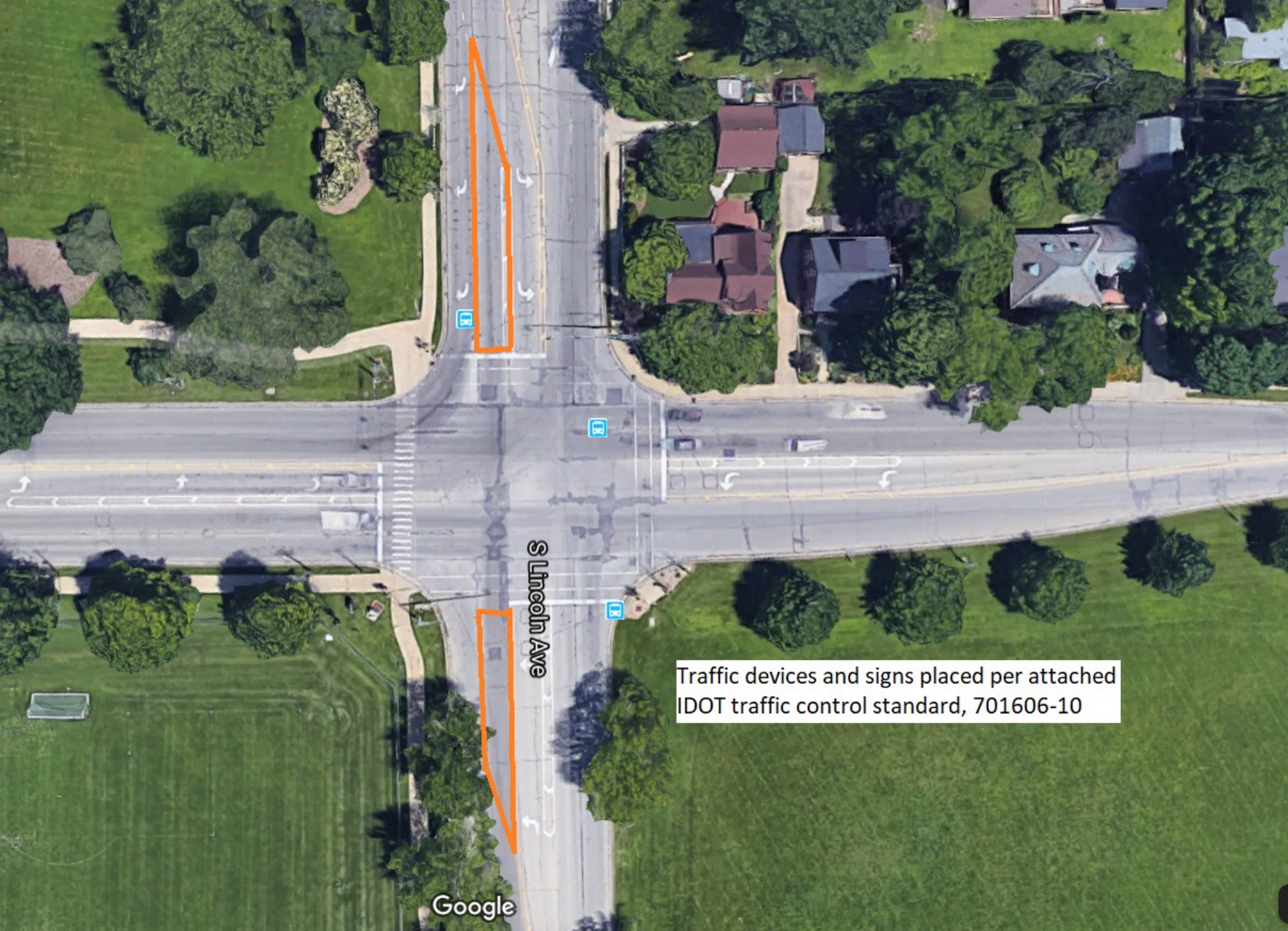
Are additional safety precautions needed? No

Please provide a diagram noting signage, re-routing, safety features, etc. with related explanations. Diagram required.

- Yes No Is barricading required? If so, indicate the barricade locations on the diagram.
Will Facility & Services staff place the barricades? If the barricades will be placed by others, give the name of person responsible and the telephone number: Hoerr Construction, James Driskill, will be responsible to traffic control devices.
Will police be necessary to direct the traffic? If so, name jurisdiction times, dates and location of each officer needed:
Will this street closure affect University of Illinois parking meters on the street or in the parking lots in this area? If so, you MUST contact the Parking Department at 333-3530 as there may be a fee assessed.
Will MTD, DRES or other bus route re-locations be necessary? If so, coordinate with affected agency. Record name and date of discussion with agency representative:
Will deliveries be permitted? If so, how will access be controlled?

Date approved: 8/10/20 Approved By: Stacey DeLorenzo

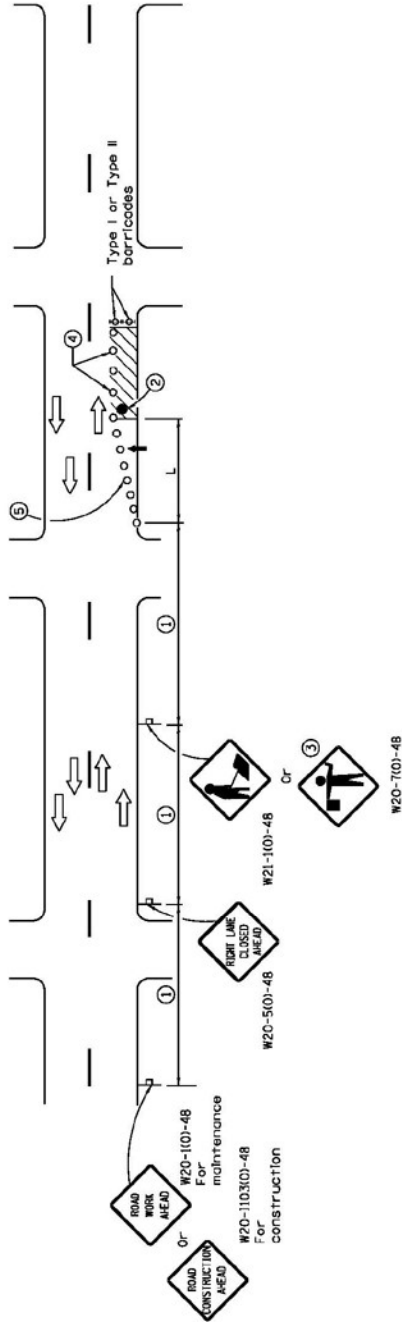




S Lincoln Ave

Traffic devices and signs placed per attached IDOT traffic control standard, 701606-10

Google



SIGN SPACING	
Posted Speed	Sign Spacing
55	500' (150 m)
50-45	350' (100 m)
45	200' (60 m)

SYMBOLS

- ↑ Arrow board
- Cone, drum or barricade
- ⊥ Sign on portable or permanent support
- ▨ Work area
- ⊕ Barricade or drum with flashing light
- Flagger with traffic control sign.

- 1 Refer to SIGN SPACING TABLE for distances.
- 2 Required for speeds > 40 mph.
- 3 Use flagger sign only when flagger is present.
- 4 Cones at 25' (8 m) centers for 250' (75 m). Additional cones may be placed at 50' (15 m) centers. When drums or Type I or Type II barricades are used, the interval between devices may be doubled.
- 5 Cones, drums or barricades at 20' (6 m) centers in taper.

GENERAL NOTES
 This Standard is used where at any time, day or night, any vehicle, equipment, workers or their activities encroach on the pavement requiring the closure of one traffic lane in an Urban area.

Calculate L as follows:

SPEED LIMIT	FORMULAS	
	English	(Metric)
40 mph (70 km/h) or less	$L = \frac{WS^2}{60}$	$L = \frac{WS^2}{150}$
45 mph (80 km/h) or greater	$L = (W)(S)$	$L = 0.65(W)(S)$

W = Width of off-shoulder
 in feet (meters).

S = Normal posted speed
 mph (km/h).

All dimensions are in inches (millimeters) unless otherwise shown.

DATE	REVISIONS
1-1-15	Renamed standard. Moved access on Sheet 2 to new Highway Standard.
1-1-14	Revised worker's sign number to agree with current MUTCD.

URBAN SINGLE LANE CLOSURE, MULTILANE, 2W WITH MOUNTABLE MEDIAN
STANDARD 701606-10

Illinois Department of Transportation
 APPROVED January 1, 2015
 ENGINEER OF SAFETY ENGINEERING
 APPROVED January 1, 2015
 ENGINEER OF DESIGN AND ENVIRONMENT
 ISSUED 1-1-97